

THIS INSTRUMENT PREPARED BY  
DAVID P. LINDLEY  
OF  
**CAULFIELD AND WHEELER, INC.**  
SURVEYORS - ENGINEERS - PLANNERS  
7301-A WEST PALMETTO PARK ROAD, SUITE 100A  
BOCA RATON, FLORIDA 33433 - (561)392-1991  
JUNE - 1998

# ORANGE GROVE ESTATES

A PLANNED UNIT DEVELOPMENT  
A PORTION OF SECTION 26, TOWNSHIP 44 SOUTH, RANGE 41 EAST,  
VILLAGE OF WELLINGTON, PALM BEACH COUNTY, FLORIDA

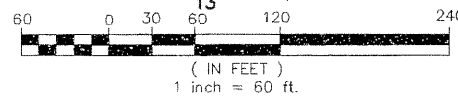
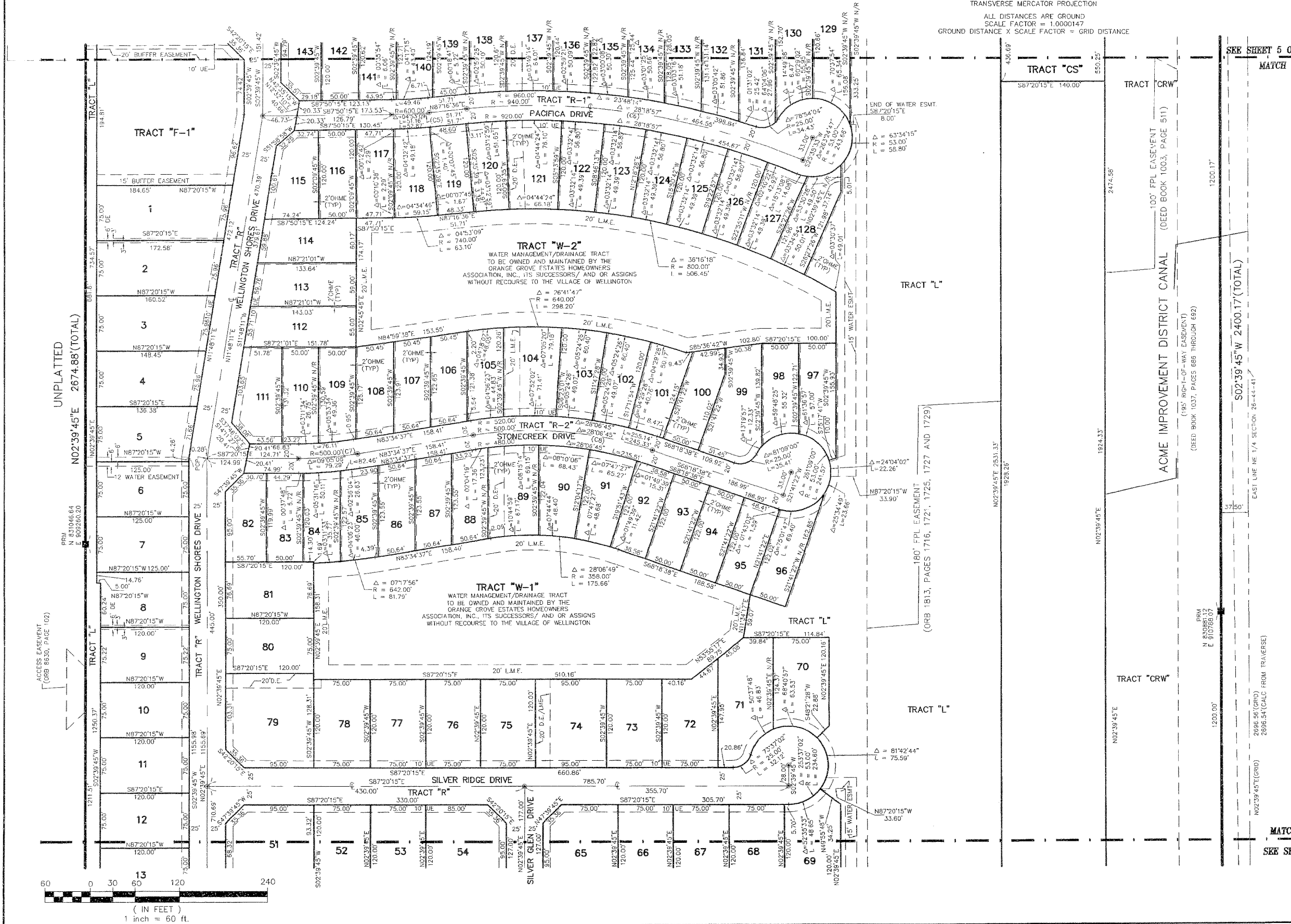
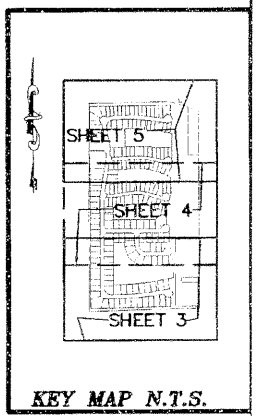
NOTES  
COORDINATES, BEARINGS AND DISTANCES

COORDINATES NA BEARINGS SHOWN ARE GRID  
DATUM = NAD 83 1990 ADJUSTMENT  
ZONE = FLORIDA EAST  
LINEAR UNIT = US SURVEY FEET  
COORDINATE SYSTEM = 1983 STATE PLANE  
TRANSVERSE MERCATOR PROJECTION  
ALL DISTANCES ARE GROUND  
SCALE FACTOR = 1.0000147  
GROUND DISTANCE X SCALE FACTOR = GRID DISTANCE

101

STATE OF FLORIDA  
COUNTY OF PALM BEACH  
THIS PLAT WAS FILED FOR  
RECORD AT \_\_\_\_\_ M.  
THIS \_\_\_\_\_ DAY OF \_\_\_\_\_  
A.D. 199 \_\_\_\_\_ AND DULY RECORDED  
IN PLAT BOOK \_\_\_\_\_ ON  
PAGES \_\_\_\_\_ AND \_\_\_\_\_  
DOROTHY H. WILKEN  
CLERK CIRCUIT COURT

SHEET 4 OF 5



CURVE NO.	CHORD BEARING	CHORD DISTANCE
(C1)	N83°49'19"W	307.34'
(C2)	S14°45'25"W	65.01'
(C3)	S42°21'09"W	170.55'
(C4)	N64°18'42"E	104.22'
(C5)	S89°43'11"W	51.15'
(C6)	S78°33'56"E	459.84'
(C7)	N88°07'11"E	79.20'
(C8)	S82°22'00"E	242.87'
(C9)	N42°20'15"W	159.81'
(C10)	N42°56'54"W	161.46'
(C11)	N201°3'35"W	87.90'
(C12)	S65°49'15"E	87.23'
(C13)	S66°52'34"W	320.64'

MATCH LINE  
SEE SHEET 3 OF 5

SEE SHEET 5 OF 5  
MATCH LINE